

DECAP^{smart} Plus performs therapies of CO₂ removal simple or associated with hemofiltration in total safety.

The characteristics of the system allow treatments lasting up to 5 days without any replacement or modification of the disposable kit in both therapeutic approaches.

DECAP^{smart} Plus allows blood flows varying between 30 and 450 ml / min and when used in ECCO₂R+HF to infuse liquids in post-dilution up to 6 liter / h; in this treatment the clever use of a modular clamp allows the management of a weight loss between 10 and 1000 gr/h.

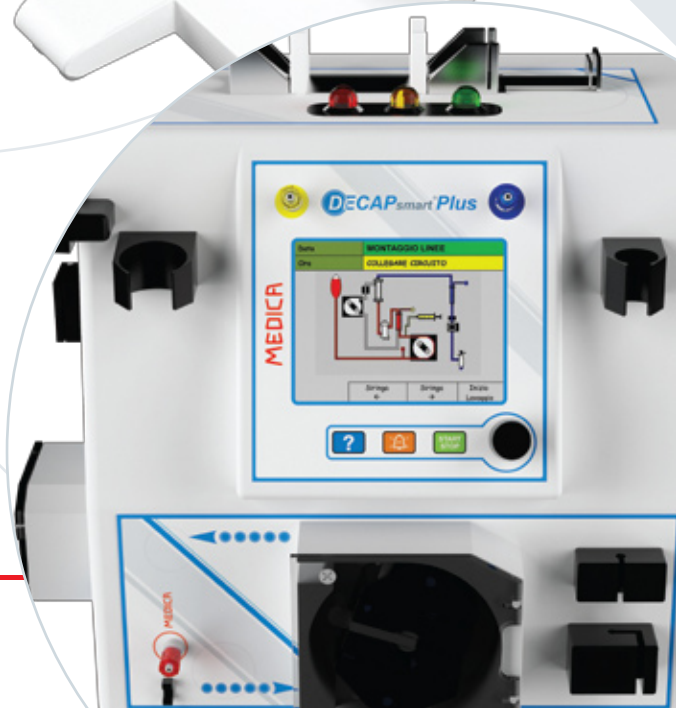
The interface is simple and intuitive, based on a color well organized display, a thumbwheel and 3 buttons.

KIT ECCO₂R

- complete set of lines marked with color codes to perform a safe and quick assembly
- an oxigenator made of Polymethylpentene

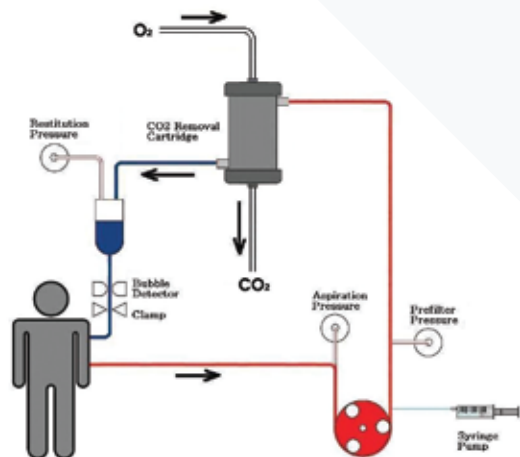
KIT ECCO₂R+HF

- set of lines marked with color codes to perform a safe and quick assembly
- an oxigenator made of Polymethylpentene
- an hemofilter 1.2 sqm

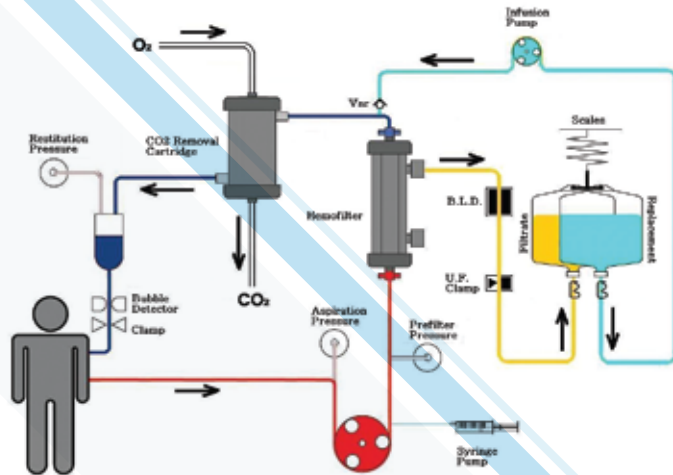


AVAILABLE TREATMENTS

ECCO₂R and ECCO₂R+HF are minimally invasive techniques due to the small blood flow that rarely exceeds 350 ml / min, using temporary vascular access for dialysis shunt. The removal of CO₂ takes place thanks to an oxygenator. In the treatment of ECCO₂R +HF the hemofilter located upstream of the oxygenator allows an adequate renal support if there is an organ failure in addition to optimizing the process of removing carbon dioxide with the oxygenator.



CO₂ REMOVAL



CO₂ REMOVAL + HF

TECHNICAL DATA

Class	1 tipo BF
QB Blood flow	Variable from 5 to 450 ml / min - resolution 5 ml / min
Q Infusion flow	Varying from 600 to 3000 ml / h - resolution 50 ml / h
Q weight loss	Variable from 0 to 500 ml / h - resolution 50 ml / h
Syringe pump	Capacity 30 ml syringe
	Continuous infusion of 0.1 to 20 ml / h with steps every 30 "
	Bolus infusion in 0.1 to 5.0 ml with the period from 5 to 60 min
Aspiration pressure	Range -300: +250 mmHg - 10 mmHg resolution Accuracy: ± 10 mmHg
Restitution pressure	Range -100: +400 mmHg - 10 mmHg resolution Accuracy: ± 10 mmHg
Pre-filter pressure	Range -100: +400 mmHg - 10 mmHg resolution Accuracy: ± 10 mmHg
Air bubble detector	Ultrasound can detect bubbles > = 100 µl
Modular Ultrafiltration Clamp	Type of trapping,
Fluid control	A gravimetric balance, maximum capacity 12 Kg - resolution 3 gr
Display	Color Display 4.7 "
Parameter selection, start / stop, confirmation and silencing	Executable WITH wheel selector and 3 buttons
Parameter selection, start / stop, confirmation and silencing	executable wheel selector and 3 buttons

ELECTRICAL DATA

Power supply	230 V (+/-10%)
Frequency	50 Hz
Power adsorption	52 VA under normal conditions 110 VA for a second reopening elettropinza

DIMENSIONS AND WEIGHT

Height Equipment	360 mm
Width	370 mm
Depth	290 mm
Weight	12 Kg
Trolley Height	930 mm
Trolley base	440x500 mm
Maximum height pole	1970 mm
Trolley weight	21 Kg

ENVIRONMENTAL WORKING CONDITIONS

Temperature	Range 15 : 35 °C
Humidity	maximum 80% non-condensing
Atmospheric Pressure	Range 70 : 106 kPa

ENVIRONMENTAL TRANSPORT AND STORAGE

Temperature	Range -20 : +60 °C
Humidity	Range 10 : 96% non condensing

MANUFACTURER

MEDICA S.p.A. Via degli Artigiani, 7 | 41036, Medolla (Modena) Italia
Tel: +39 0535 51159 | Fax: +39 0535 52605 | Email: info@medica.it | www.medica.it

MEDICA



CE 0476 UNI EN ISO 9001: 2008 UNI CEI EN ISO 13485: 2012